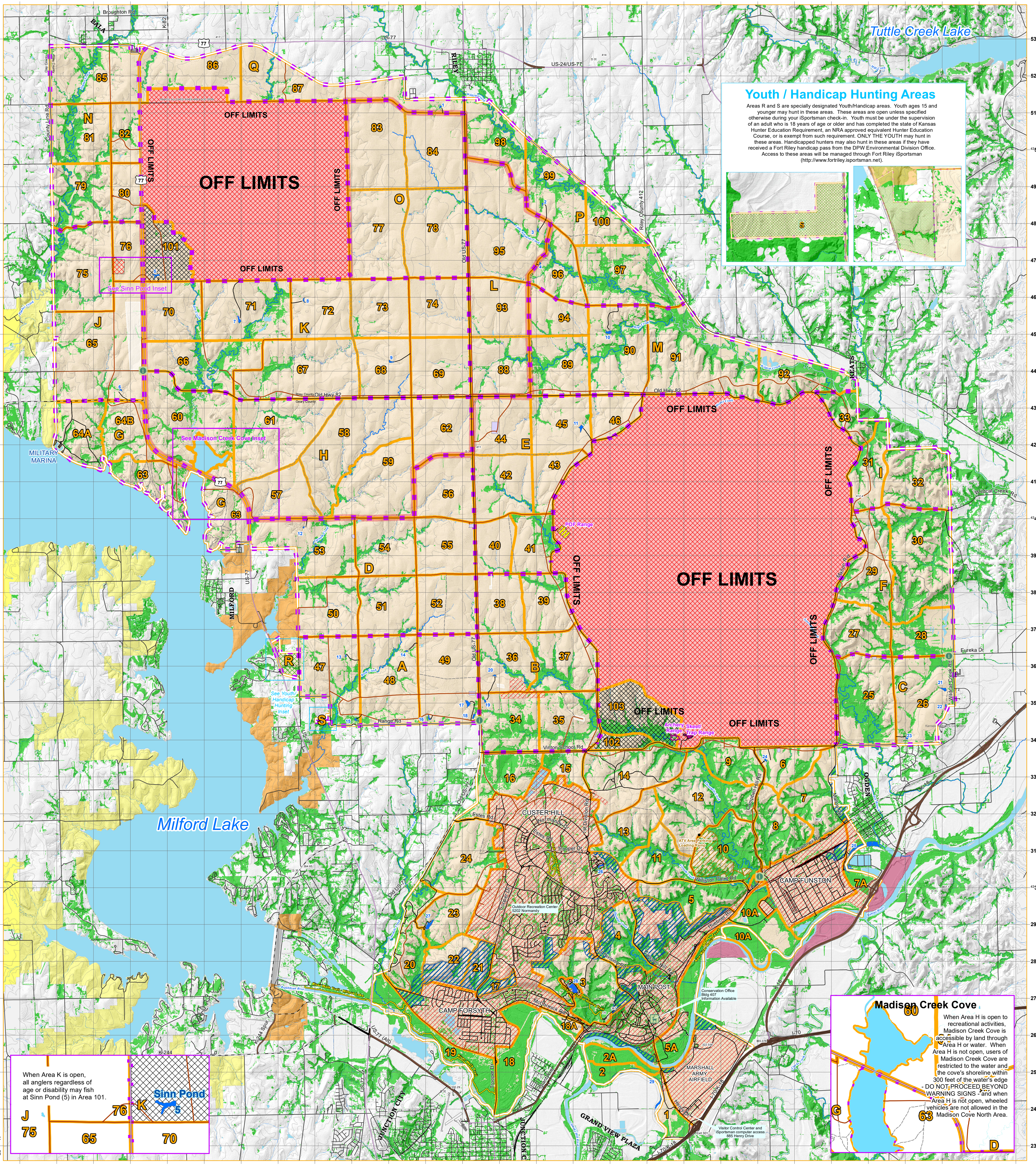


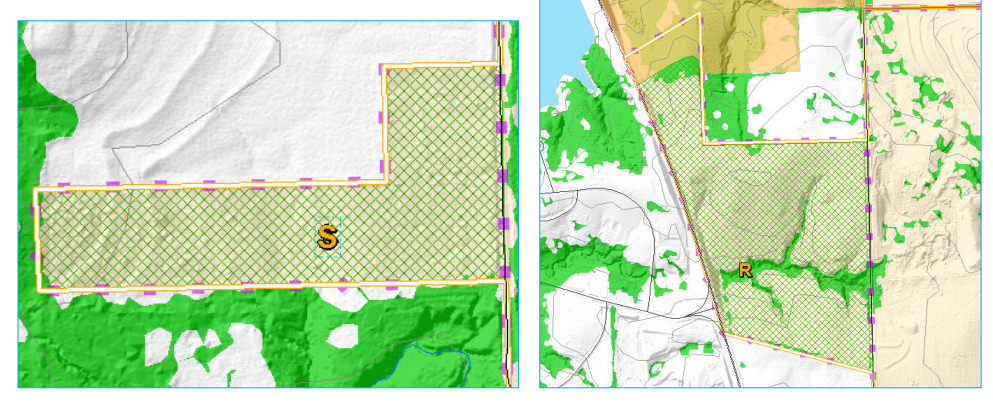
# Fort Riley Outdoor Recreation and Fuelwood Cutting Map: 2019 Edition

Coordinate System: WGS 1984 UTM ZONE 14N  
Map Scale: 1:63,000

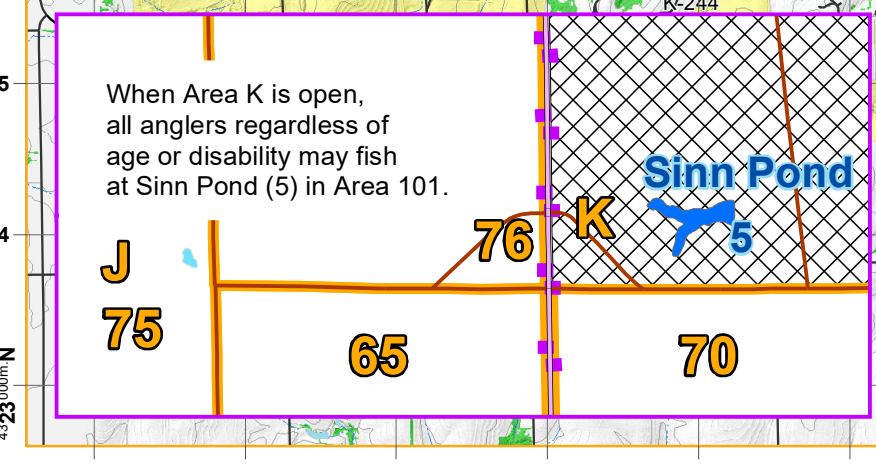


## Youth / Handicap Hunting Areas

Areas R and S are specially designated Youth/Handicap areas. Youth ages 15 and younger may hunt in these areas. These areas are open unless specified otherwise during your Sportsman check-in. Youth must be under the supervision of an adult who is 18 years of age or older and has completed the state of Kansas Hunter Education Requirement, an NRA approved equivalent Hunter Education Course, or is exempt from such requirement. ONLY THE YOUTH may hunt in these areas. Handicapped hunters may also hunt in these areas if they have received a Fort Riley handicap pass from the DFW Environmental Division Office. Access to these areas will be managed through Fort Riley iSportsman (<http://www.fortriley.isportsman.net>).

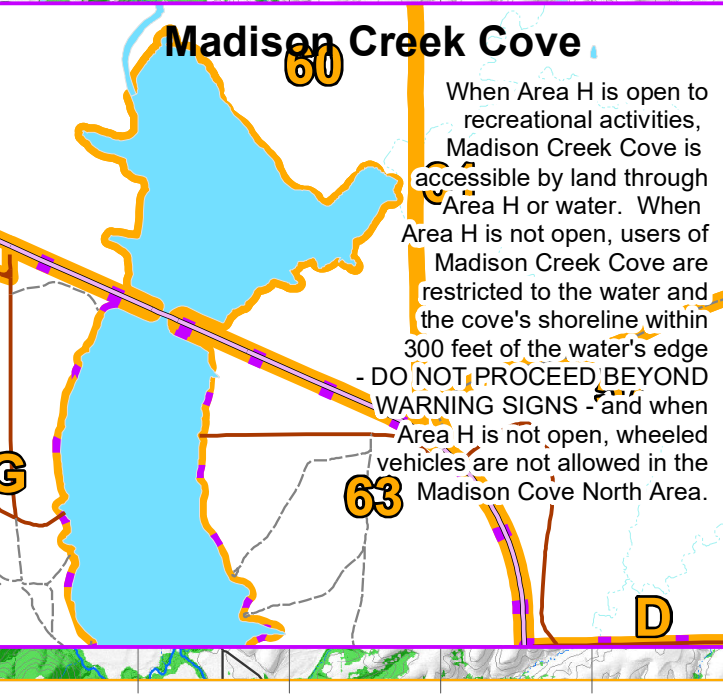


When Area K is open, all anglers regardless of age or disability may fish at Sinn Pond (5) in Area 101.



## Madison Creek Cove

When Area H is open to recreational activities, Madison Creek Cove is accessible by land through Area H or water. When Area H is not open, users of Madison Creek Cove are restricted to the water and the cove's shoreline within 300 feet of the water's edge. DO NOT PROCEED BEYOND WARNING SIGNS - and when Area H is not open, wheeled vehicles are not allowed in the Madison Cove North Area.



Map Features		Military Features	
	Road		MPCR/Impact Area OFF LIMITS
	Interstate Highway		Training Area - Off Limits
	Primary Highway, Divided		MPCR Danger Area
	Primary Highway, Undivided		Harden Low Water Crossings
	Secondary Highway, Divided		Urban Cluster
	Secondary Highway, Undivided		Training Site
	Harden Tank Trail (Improved Road)		
	4X4 Trails (Unimproved Road)		
	Railroad		
	Hiking Trail		
	Maneuver Area Boundary		
	Training Area Boundary		
	Installation Boundary		
	Conservation Office		
	Information Station		
	Archery Only Hunting (AO)		
	ATV Area		
	Skeet/Trap Range		
	POF Range		
	Youth/Handicap Hunting Area		
	Fishing Pond		
	Water Body		
	Stream		
	NO HUNTING CANTONMENT		
	Woodland		
	Contour Line		
	Benchmark		
	KDWP Public Hunting		
	USACE Public Hunting		
	KDWP Managed		

### Pond Index

1 Roblyer Pond	16 Chestnut Pond
2 Blue Pond	17 Pritchard Pond
3 Stortz Pond	18 Vinton Pond
4 Halasz Pond	19 CACTF Pond
5 Sinn Pond	20 Bravo Pond
6 Williams Pond	21 Dale Pond
7 Avery Pond	22 Goens Pond
8 Stone Pond	23 Seven Mile Pond
9 Rich Pond	24 Campbell Pond
10 Beck Pond	25 Funston Lake
11 LaGrange Pond	26 Cameron Springs
12 Farum Pond	27 Breakneck Lake
13 Gaches Pond	28 Moon Lake
14 Miller Pond	29 Marshall Lake
15 Rush Pond	

Scale bars: 0 to 8,000 Meters, 0 to 8,000 Yards, 0 to 4 Miles, 0 to 4 Nautical Miles. 1 inch = 0.79 miles.

**SPHEROID:** WGS84  
**GRID:** 1000 METER UTM ZONE 14  
**PROJECTION:** TRANSVERSE MERCATOR  
**CENTRAL MERIDIAN:** 99° W LONGITUDE  
**LATITUDE OF ORIGIN:** 0° LATITUDE  
**VERTICAL DATUM:** MEAN SEA LEVEL  
**HORIZONTAL DATUM:** WGS84  
**CONTROL BY:** U.S. GEOLOGICAL SURVEY

**GRID NORTH:** MAGNETIC NORTH  
**TRUE NORTH:** MAGNETIC NORTH

**CONVERSION:** TO CONVERT A MAGNETIC AZIMUTH TO A GRID AZIMUTH: ADD G.M. ANGLE. TO CONVERT A GRID AZIMUTH TO A MAGNETIC AZIMUTH: SUBTRACT G.M. ANGLE.

**COORDINATE CONVERSION:** WGS 84 (NAD 83) TO NAD 27 (Grid): Add 31m E, Subtract 209m N. Geographic Subtract 1" Long, Subtract 0.1" Lat. One second of longitude equals 23.92m. One second of latitude equals 30.84m.

**LOCATION DIAGRAM:** Shows the location of Fort Riley within Kansas, USA, and its position relative to neighboring counties (Clay, Dickinson, Geary).

**Landform:** A 3D topographic map showing the terrain of the area.

**USGS 7.5 Minute Quadrangles:** A grid of quadrangles used for precise location reporting.

**NOTES:** THE BOUNDARY FOR FORT RILEY SHOULD NOT BE CONSIDERED AUTHORITY. CAUTION: TELEPHONE AND ELECTRIC SERVICE LINES ARE NOT SHOWN.

**County Boundaries:** A map showing the boundaries of Clay, Dickinson, and Geary counties.

For information regarding Open Areas visit <http://www.fortriley.isportsman.net>